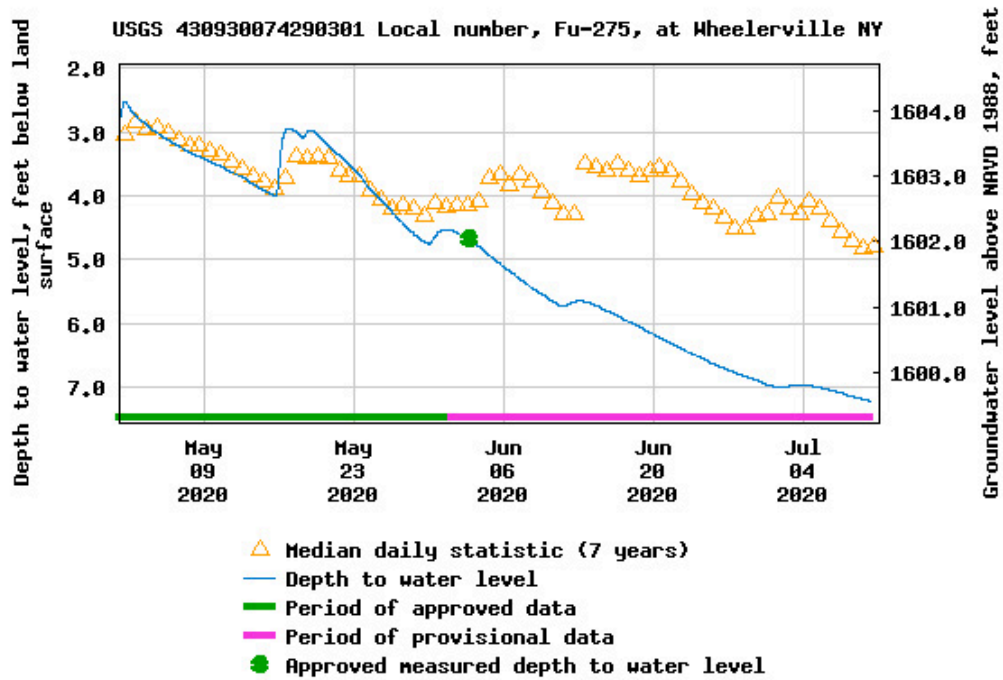


Wheelerville Dug Well Water Table Gauge
 (feet below land surface)
 (Source: USGS)

Depth to water level, feet below land surface

Most recent instantaneous value: 7.23 07-10-2020 05:15 EST



Create [presentation-quality](#) / [stand-alone](#) graph. Subscribe to [WaterAlert](#)

[+ Share this graph](#) | [f](#) [t](#) [g](#) [e](#)

**Daily depth to water level, feet below land surface --
 statistics for Jul 10 based on 8 water years of record [more](#)**

Min (2013)	25th percen- tile	Median	Mean	75th percen- tile	Max (2012)	Most Recent Instantaneous Value Jul 10
3.07	3.74	4.8	5.04	6.63	6.86	7.23

There is a water table level gauge between Irving Pond Road and Nick Stoner Municipal Golf Course. The gauge automatically records water table levels in units of feet below reference point (near grade). The larger the number, the lower the water table. Water table levels are highly seasonal. The water table rises in the spring and falls in the fall. To best compare where we are right now with previous years, I have chosen July 10 8:00 EST as the annual sample point, for data from 2012 through 2020. There was no data available for July 10 11 and earlier available to me.

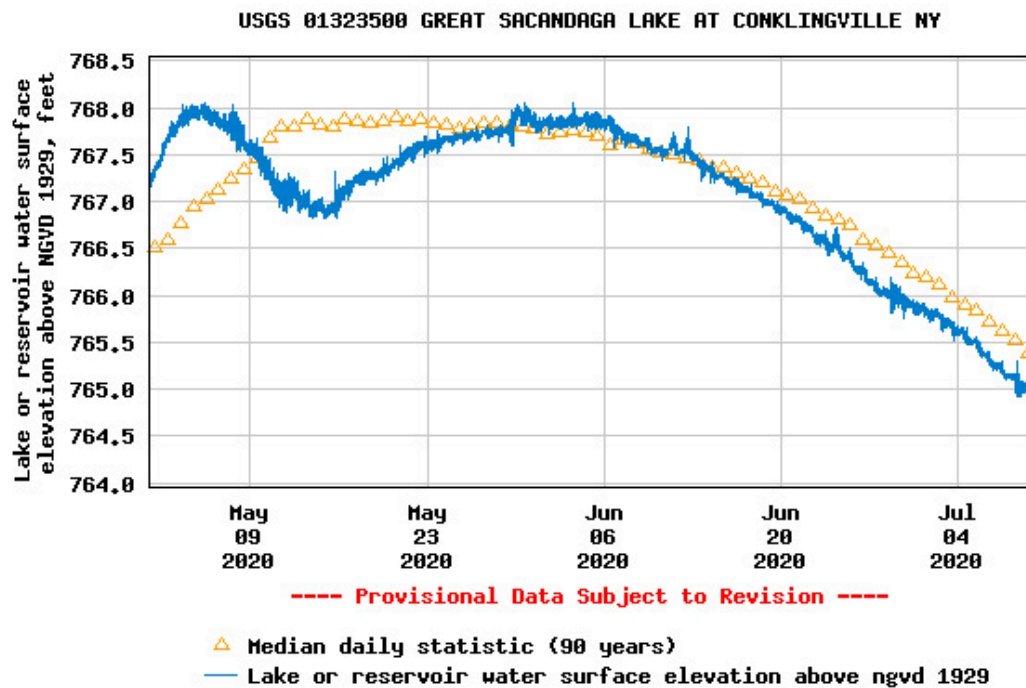
2012-07-10	6.85
2013-07-10	3.06
2014-07-10	3.64
2015-07-10	4.25
2016-07-10	6.62
2017-07-10	3.91
2018-07-10	6.64
2019-07-10	5.37
2020-07-10	7.23

As you can see, we are at the lowest water table level in these nine years of samples. The average is 5.29 feet. We are a full 1.94 feet below average. We should not be surprised by the reduced inflow into our lakes this year.

Great Sacandaga

Lake or reservoir water surface elevation above NGVD 1929, feet

Most recent instantaneous value: 764.94 07-09-2020 18:30 EST



Create [presentation-quality](#) / [stand-alone](#) graph. Subscribe to [WaterAlert](#)

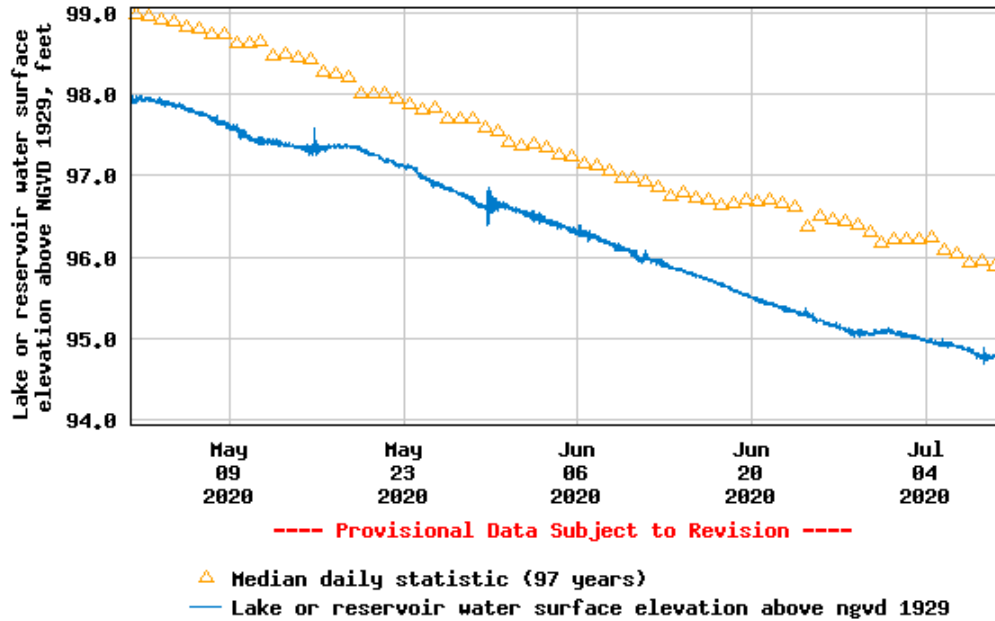
[+ Share this graph](#) | [f](#) [t](#) [r](#) [e](#)

Daily lake or reservoir water surface elevation above ngvd 1929, feet -- statistics for Jul 9 based on 90 water years of record [more](#)

Min (1941)	25th percentile	Most Recent Instantaneous Value Jul 9	Mean	Median	75th percentile	Max (2013)
753.36	764.5	764.94	765.34	765.38	766.72	770.53

Lake Champlain

USGS 04294500 LAKE CHAMPLAIN AT BURLINGTON, VT



Create [presentation-quality](#) / [stand-alone](#) graph. Subscribe to [WaterAlert](#)

[+ Share this graph](#) | [f](#) [t](#) [r](#) [e](#)

Daily lake or reservoir water surface elevation above ngvd 1929, feet -- statistics for Jul 9 based on 105 water years of record [more](#)

Min (1941)	Most Recent Instantaneous Value Jul 9	25th percentile	Median	Mean	75th percentile	Max (2013)
94.09	94.78	95.29	95.89	96.05	96.65	99.63